

Parents:

Remember that your child has the right to go to school, no matter where you live or how long you have lived there.



Tom Changnon, Superintendent

Career, Charter & Alternative Education
1100 H Street,
Modesto, CA 95354
(209) 238-1500

For more information about services offered by our Division, please visit our website at www.stancoe.org

9/12/07



Homeless Education Program

Support Services



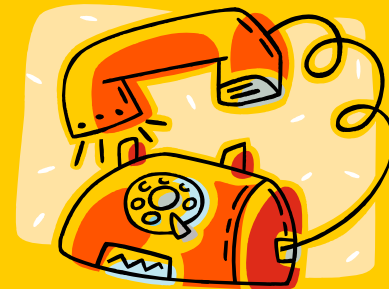
Career, Charter & Alternative Education

Students who are living in any of the following situations are considered homeless:

- ▶ lacks a regular, fixed and adequate nighttime residence
- ▶ is living in a shelter, hotel or motel
- ▶ is living in a public place (cars, parks, campsite or on the street)
- ▶ is temporarily living with relatives due to economic hardships
- ▶ is awaiting foster care placement
- ▶ is abandoned in a hospital
- ▶ is a migrant child who qualifies under any of the above

Support Services Include:

- ◆ Referrals to Community agencies
- ◆ Transportation (when feasible)
- ◆ School Supplies
- ◆ Academic Support
- ◆ Tutoring
- ◆ Enrollment in the Free Breakfast and Lunch Program



For more information
Contact your Student Support Advocate:

Angelica Carranza
(209) 277-5400

E-mail: acarranza@stancoe.org

John B. Allard Center
PEP

Empire School District
Hughson School District
Patterson School District
Turlock School District

Delores Peña-Nolazco
(209) 277-7908

E-mail: dpena@stancoe.org

PACE

Salida School District
Sylvan School District